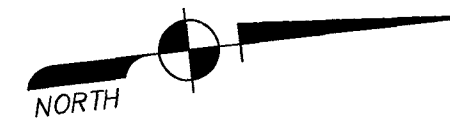


ALTA / NSPS SURVEY

0 40 80
GRAPHIC SCALE IN FEET
scale: 1" = 40'



LEGEND

- BACK FLOW PREVENTOR VALVE
- BOLLARD
- CABLE TELEVISION RISER
- CATCH BASIN
- CLEAN OUT
- CONCRETE LIGHT POLE
- CONCRETE UTILITY POLE
- CONCRETE UTILITY POLE WITH LIGHT
- CROSSWALK SIGNAL POLE
- CURB INLET
- DOUBLE DETECTOR CHECK VALVE
- DRAINAGE MANHOLE
- ELECTRIC RISER
- ELECTRIC OUTLET
- ELECTRIC SERVICE BOX
- ELECTRIC RISER
- FIRE HYDRANT
- GAS METER
- GREASE TRAP
- GUY ANCHOR
- IRRIGATION CONTROL BOX
- METAL LIGHT POLE
- SIAMSE CONNECTION
- SIGN
- TELEPHONE MANHOLE
- TRAFFIC LIGHT SUPPORT POLE
- TRAFFIC SIGNAL SERVICE BOX
- TREE NUMBER
- UNDERGROUND GAS MARKER
- UNKNOWN UTILITY SERVICE BOX
- VAULT
- WATER METER
- WATER VALVE
- WOOD UTILITY POLE
- WOOD UTILITY POLE WITH LIGHT
- YARD DRAIN
- EXCEPTION NUMBER (TYPICAL)

AVIROM & ASSOCIATES, INC.
SURVEYING & MAPPING



80 S.W. 2ND AVENUE, SUITE 102
BOCA RATON, FLORIDA 33432
(561) 392-2554 / WWW.AVIROMSURVEY.COM

DATE: 10/27/21
BY: J.T.D.
F.B./P.G.: 10/27/21

REVISIONS
DATE: 10/27/21
BY: J.T.D.
F.B./P.G.: 10/27/21

DATE: 10/27/21
BY: J.T.D.
F.B./P.G.: 10/27/21

DATE: 10/27/21
BY: J.T.D.
F.B./P.G.: 10/27/21

DATE: 10/27/21
BY: J.T.D.
F.B./P.G.: 10/27/21

DATE: 10/27/21
BY: J.T.D.
F.B./P.G.: 10/27/21

DATE: 10/27/21
BY: J.T.D.
F.B./P.G.: 10/27/21

DATE: 10/27/21
BY: J.T.D.
F.B./P.G.: 10/27/21

DATE: 10/27/21
BY: J.T.D.
F.B./P.G.: 10/27/21

DATE: 10/27/21
BY: J.T.D.
F.B./P.G.: 10/27/21

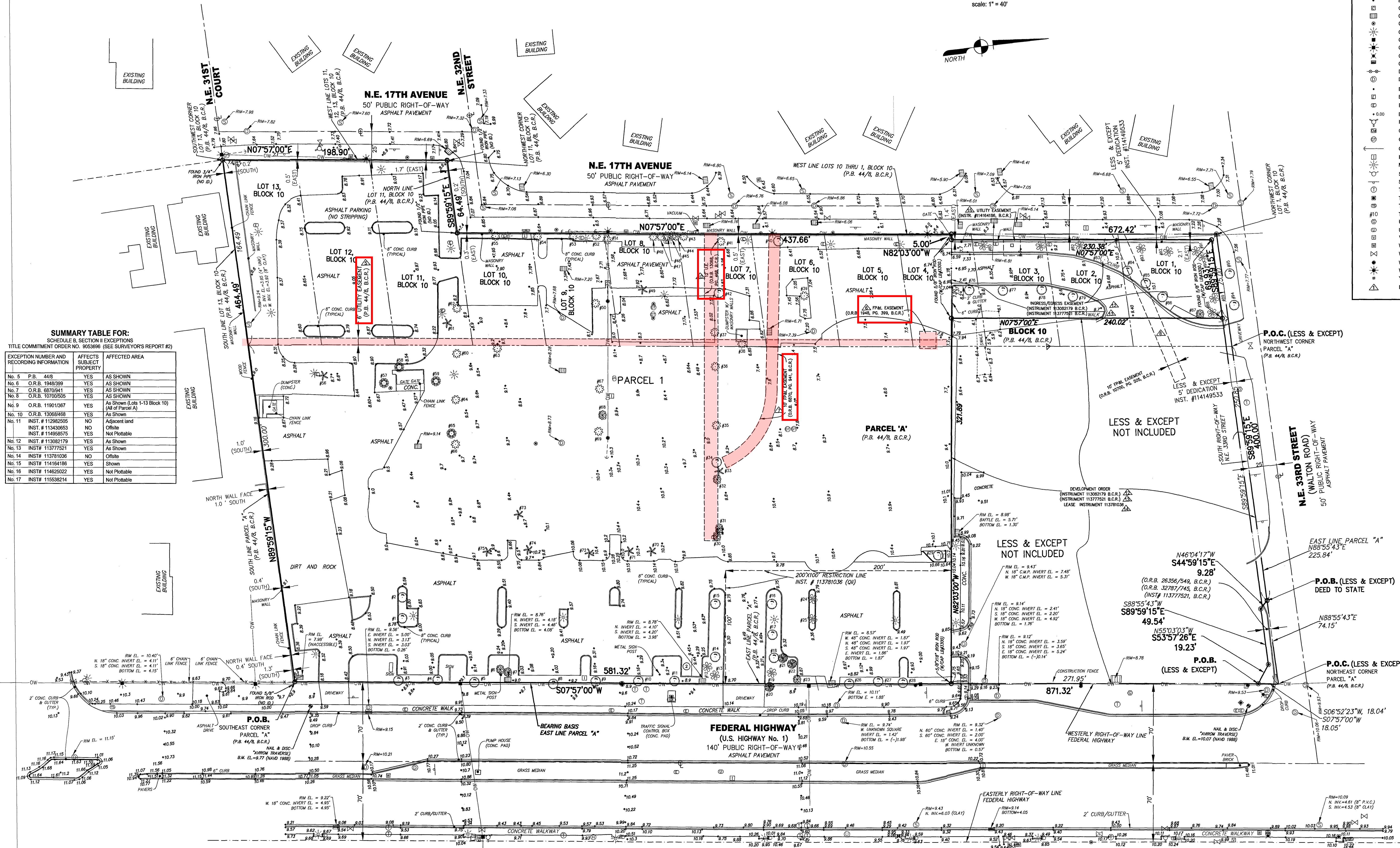
DATE: 10/27/21
BY: J.T.D.
F.B./P.G.: 10/27/21

DATE: 10/27/21
BY: J.T.D.
F.B./P.G.: 10/27/21

DATE: 10/27/21
BY: J.T.D.
F.B./P.G.: 10/27/21

SUMMARY TABLE FOR:
SCHEDULE B, SECTION II EXCEPTIONS
TITLE COMMITMENT ORDER NO. 9053696 (SEE SURVEYOR'S REPORT #2)

EXCEPTION NUMBER AND RECORDING INFORMATION	AFFECTS SUBJECT PROPERTY	AFFECTED AREA
No. 5 P.B. 44/8	YES	AS SHOWN
No. 6 O.R.B. 1948399	YES	AS SHOWN
No. 7 O.R.B. 6870941	YES	AS SHOWN
No. 8 O.R.B. 10700505	YES	AS SHOWN
No. 9 O.R.B. 11901367	YES	As Shown (Lots 1-13 Block 10) (All of Parcel A)
No. 10 O.R.B. 13068468	YES	As Shown
No. 11 INST. # 112982505 INST. # 113430653 INST. # 114955375	NO	Adjacent land Offsite
No. 12 INST. # 113082179	NO	As Shown
No. 13 INST. # 11377521	YES	As Shown
No. 14 INST. # 113781036	NO	Offsite
No. 15 INST. # 114164186	YES	Shown
No. 16 INST. # 114625022	YES	Not Plottable
No. 17 INST. # 115538214	YES	Not Plottable



NOTE
ELEVATIONS SHOWN HEREON
ARE BASED ON THE NORTH
AMERICAN VERTICAL DATUM OF 1988
(NAVD 88)
PZ20-050000003
10/27/21

NOT VALID WITHOUT
SHEETS 1 AND 2
PZ20-050000003
10/27/21
10/27/21

ALTA/NSPS LAND TITLE SURVEY
PORTION OF PARCEL "A" & BLOCK 10
CRESTHAVEN NO. 8

(P.B. 44, PG. 8, B.C.R.)
POMPAHO BEACH
BROWARD COUNTY, FLORIDA

1" = 40'
DATE: 10/27/21
BY: J.T.D.
F.B./P.G.: 10/27/21
SHEET: 2 OF 2
JOB #: 9657-4